

# Envelope

## AIR SEALING

**CODE**

**DO YOU HAVE A PHOTO  
OF THIS?**

**PLEASE SEND IT TO US!**

[installation.feedback@  
energycodeace.com](mailto:installation.feedback@energycodeace.com)

### Field Fabricated Fenestration

Windows and exterior doors that are field fabricated must be caulked between the window or door and the building, and doors weatherstripped. Seal all joints and penetrations to limit air infiltration. Note: field fabricated fenestration defines windows where wood frames are constructed from raw materials at the site or salvaged windows with no NFRC label, and have default U values.

**Code Reference:** 2013 Title 24, Part 6 Standards 110.6(b)

**BP**



### Electrical, Duct & Pipe Penetrations

Seal all electrical, duct and pipe penetrations through exterior walls, ceilings, rim joists, top/bottom plates; anywhere air might leak between conditioned and unconditioned space. Use appropriately rated sealing material.

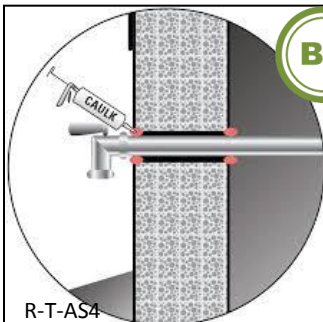
**BP**



### Outlet Boxes

Seal electrical outlet box with fire rated putty. These boxes inevitably leak. Baby outlet covers used for safety also help stop the air leaks!

**BP**



### Exterior Wall Penetrations

Air seal everything that passes through the exterior wall such as plumbing and refrigerant lines.

R-T-AS1: © PLACEHOLDER

R-T-AS2: © Architectural Energy Corporation

R-T-AS3: © Baechler, Gilbride, Hefty, Cole, Love

R-T-AS4: © DOE's Office of Energy Efficiency and Renewable Energy

# Envelope

## AIR SEALING

**Notes:**

---

---

---

---

---

---

---